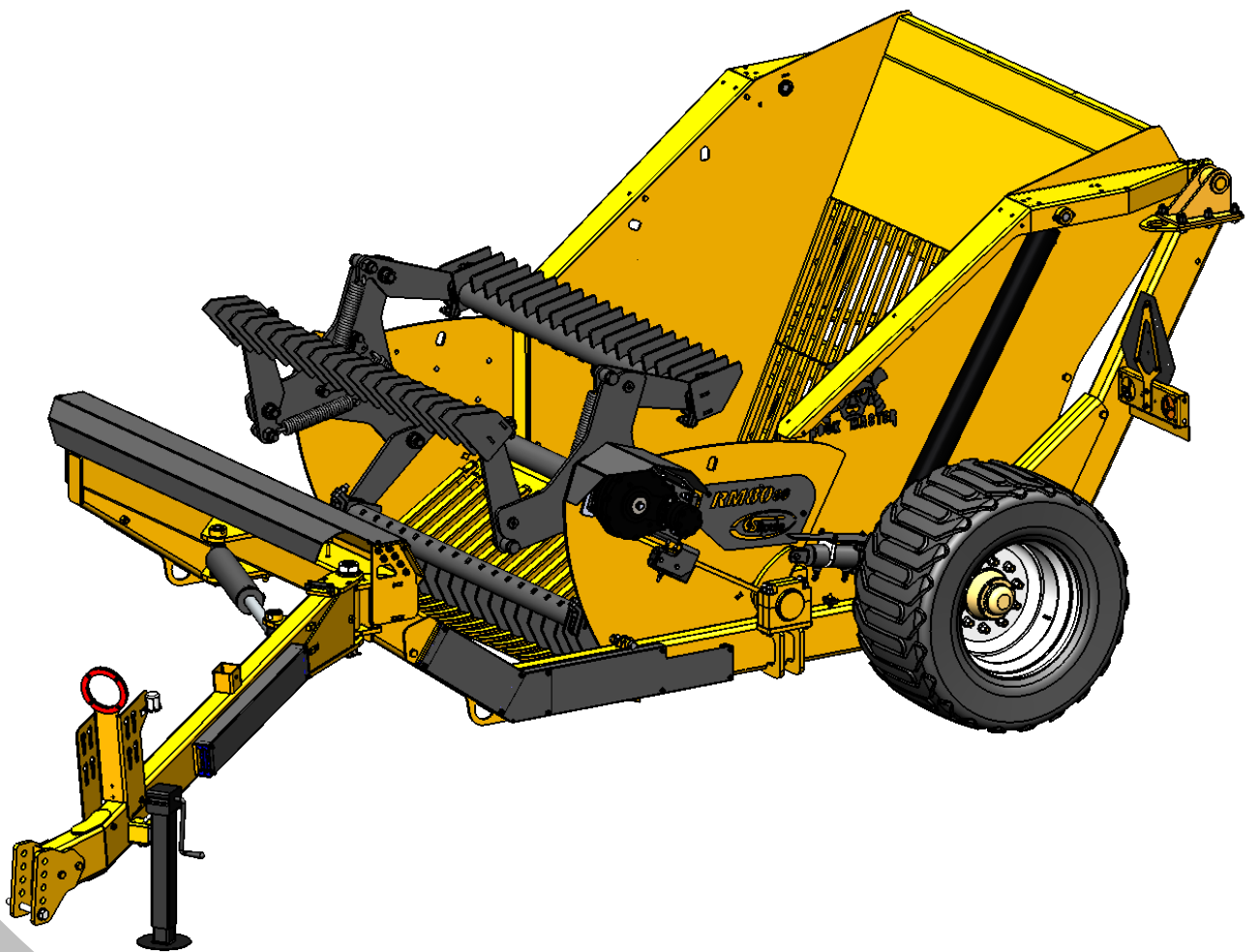




RR0280-00004
ROCK PICKER ROCK MASTER RM-
8080



Operator's manual

**Table of contents****Page**

• Introduction	4
• Dimensions	5
• Parts	
▪ Rock picker, Rock Master RM-8080 RR0280-00004	6
Tipper Assembly RR0280-05E13	9
▪ Rock picker bucket kit RM-8080 RR0280-05E15	11
▪ Reel Rock Master RR0280-06E05	12
▪ Reel Rock Master sub-ass'y RR0280-06M05	14
▪ Reel Support kit RR0280-11E01	15
▪ Wheels kit 550/45x22.5 16 PRTL RR-01E04	16
▪ Axis 16000 LBS RR-01E05	17
▪ Signaling kit RR-36E02	18
▪ Hitch kit	19
▪ Cylinder with lift arm RR-30E01	20
▪ Hydraulics hoses kit rock picker RR0280-29E04	21
• Guarantee	22
• Product registration	23



Congratulations on your purchase of your new S Houle inc, equipment!

This equipment will advantageously complement your agricultural machinery. It has been designed and built specifically for an agricultural market that is always in need of more efficient, better performing equipment.

This Owner's Manual is your principal reference in regards to your new equipment. To ensure your equipment delivers many years of quality use, it is important that you follow the use and maintenance guidelines set out in this manual. We urge you and those who will be using and/or performing maintenance on this equipment to ensure that you have read and understood the contents of this manual prior to first use.

Please keep this Owner's Manual within reach so that you may quickly consult it, as often as necessary. In case of ownership transfer, please ensure that you also remit this manual to the new owner or user.

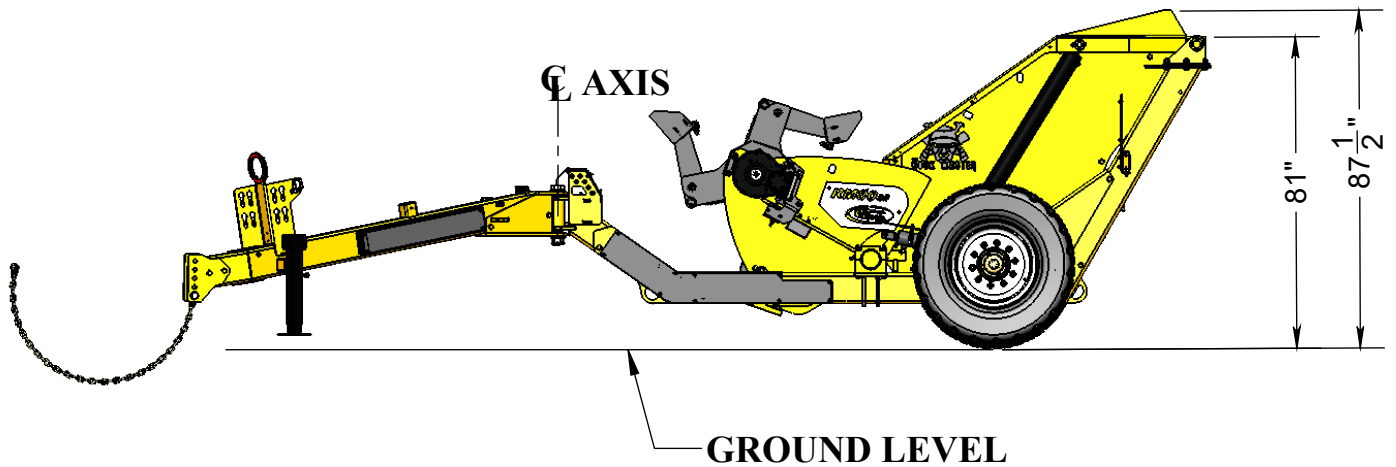
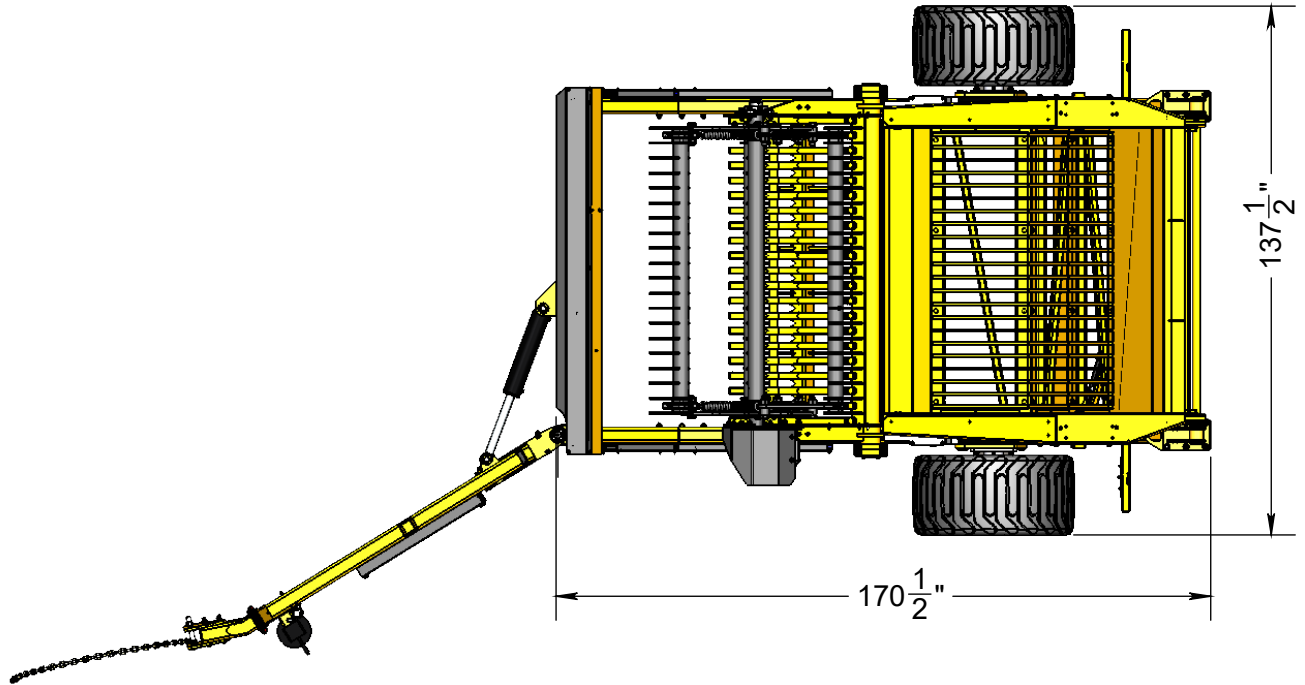
Should you have any questions, or to obtain more information or additional copies of this manual, please contact us at:

S Houle Inc.

300 boul. Industriel
St-Germain-de Grantham, Québec, Canada J0C1K0
Tel. : 819-395-4380 Fax. : 819-395-5516
Toll free : 1-888-404-4380
Email : info@shoule.com
Web : www-shoule.com



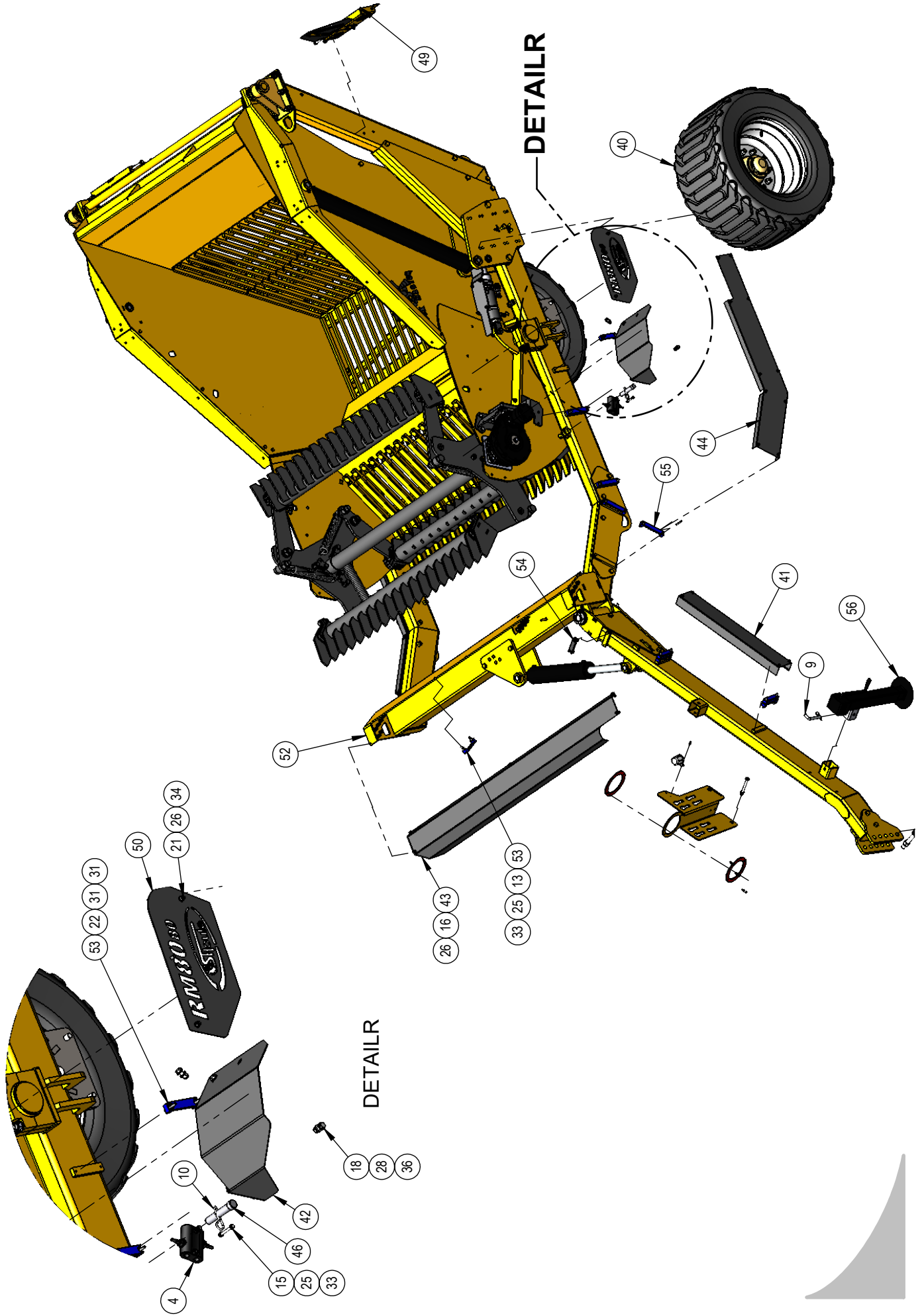
RR0280-00004
ROCK PICKER ROCK MASTER RM-8080



ROCKMASTER 2022 - RR0280-00004
WEIGHT: 9500 POUNDS



RR0280-00004
ROCK PICKER ROCK MASTER RM-8080



**RR0280-00004****ROCK PICKER ROCK MASTER RM-8080**

ITEM	NO	DESCRIPTION	QTY
1	04001	RUBBER BUMPER (JIMEXS 610-127)	2
2	07037-4	CHAIN SAFETY 3/8" x 46" Lg - 21,000 lb	1
3	31015-4	3/8" DOUBLE HOSE CLAMP	1
4	31017-5	DOUBLE CROSS OVER RELIEF PORT SAE 10 (30 GPM)	1
5	31037	ADAP.BULK HEAD 1/2" JIC(M)/ 1/2" JIC(M)/ 1/2" JIC(M)(TE)	4
6	31043-5	ADAP. BULK HEAD 1/2" JIC(M) / 1/2" JIC(M)(STR)	12
7	32033	PROTECTIVE PLUG HOLDER	1
8	35011	BENT PULL PIN 5/8" X 3"	2
9	35011-4	BENT PULL PIN 5/8" X 4"	1
10	35014	HITCH PIN CLIPS 3/16" X 3 1/4"	1
11	45AA004200100	HEX BOLT 1/4-20NC x 1" GR5	2
12	45AA004200108	HEX BOLT 1/4-20NC x 1 1/2" GR5	4
13	45AA005180200	HEX BOLT 5/16-18NC x 2" GR5	2
14	45AA005180208	HEX BOLT 5/16-18NC x 2 1/2" GR5	2
15	45AA005180300	HEX BOLT 5/16-18NC x 3" GR5	2
16	45AA006160104	HEX BOLT 3/8-16NC x 1 1/4" GR5	5
17	45AA007140308	HEX BOLT 7/16-14NC X 3 1/2" GR5	4
18	45AA008130108	HEX BOLT 1/2-13NC X 1 1/2" GR5	4
19	45AA008130508	HEX BOLT 1/2-13NC x 5 1/2" GR5	2
20	45AB100080800	HEX BOLT 1"-8NC X 8" GR8	1
21	45CC006160104	CARRIAGE BOLT 3/8"-16NC X 1 1/4" GR5	8
22	45HA005180208	FULLY THREADED STUDS 5/16-18 X 2 1/2"	18
23	45HA005180308	FULLY THREADED STUDS 5/16-18 X 3 1/2"	4
24	46AB004	HARDENED FLAT WASHER 1/4"	10
25	46AB005	HARDENED FLAT WASHER 5/16"	28
26	46AB006	HARDENED FLAT WASHER 3/8"	17
27	46AB007	HARDENED FLAT WASHER 7/16"	4
28	46AB008	HARDENED FLAT WASHER 1/2"	12
29	46AB100	HARDENED FLAT WASHER 1"	1
30	46AC005	LOCK WASHER 5/16"	2
31	47AA00518	HEX NUT 5/16-18NC	4
32	47AB00420	NYLON LOCK NUT 1/4-20 NC	6
33	47AB00518	NYLON LOCK NUT 5/16"-18NC	26
34	47AB00616	NYLON LOCK NUT 3/8"-16NC	12
35	47AB00714	NYLON LOCK NUT 7/16"-14NC	4
36	47AB00813	NYLON LOCK NUT 1/2-13 NC	6
37	47AB10008	NYLON LOCK NUT 1"-8NC	1
38	59031	ROCK MASTER LOGO	2
39	N-43051	TRANSPORT SAFETY DEVICE 18 3/8" (SLN)	2
40	RR-01E04	WHEEL ASSEMBLY 550 / 45X22.5 16PRTL	1
41	RR-04035	GUARD RM8080	1
42	RR-04049	GUARD RM8080	1
43	RR-04051	FRONT GUARD	1
44	RR-04055	GUARD RM8080	1
45	RR-04056	GUARD RM8080	1

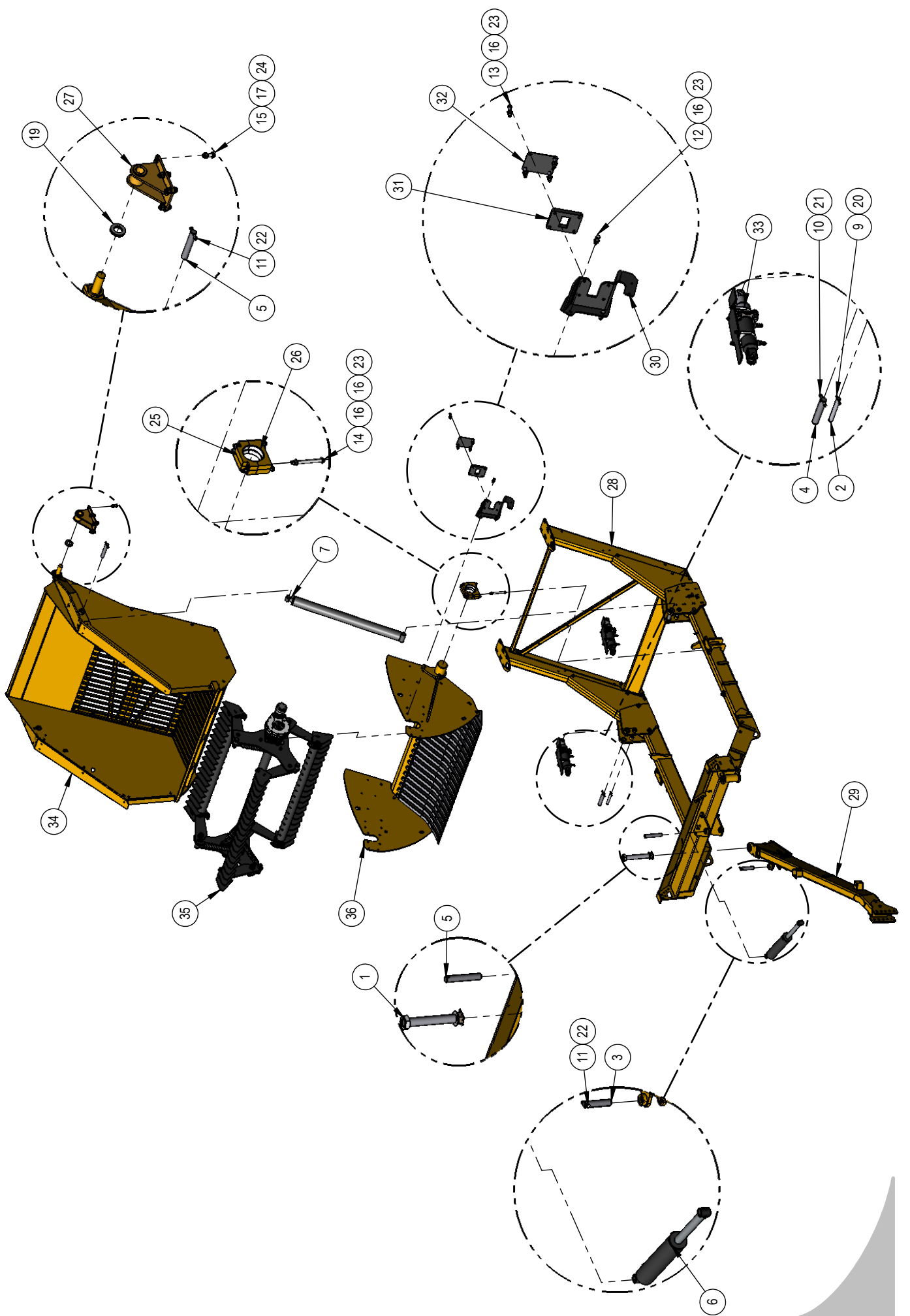


RR0280-00004
ROCK PICKER ROCK MASTER RM-8080

ITEM	NO	DESCRIPTION	QTY
46	RR-25015	LOCK PIN	1
47	RR-36005	PIVOTING SUPPORT FOR HYD. HOSES	1
48	RR-36008	HOSE PROTECTOR	2
49	RR-36E02	SIGNALING KIT	1
50	RR-59007	LOGO RM8080 LEFT	1
51	RR-59007-2	LOGO RM8080 RIGHT	1
52	RR0280-05E13	TIPPER ASS'Y	1
53	UN-31021-10	HOSE CLAMP (5)	6
54	UN-31021-11	HOSE CLAMP	1
55	UN-31021-9	HOSE CLAMP	8
56	UN-43076	JACK 8800 LBS ASS'Y	1



RR0280-05E13 TIPPER ASS'Y





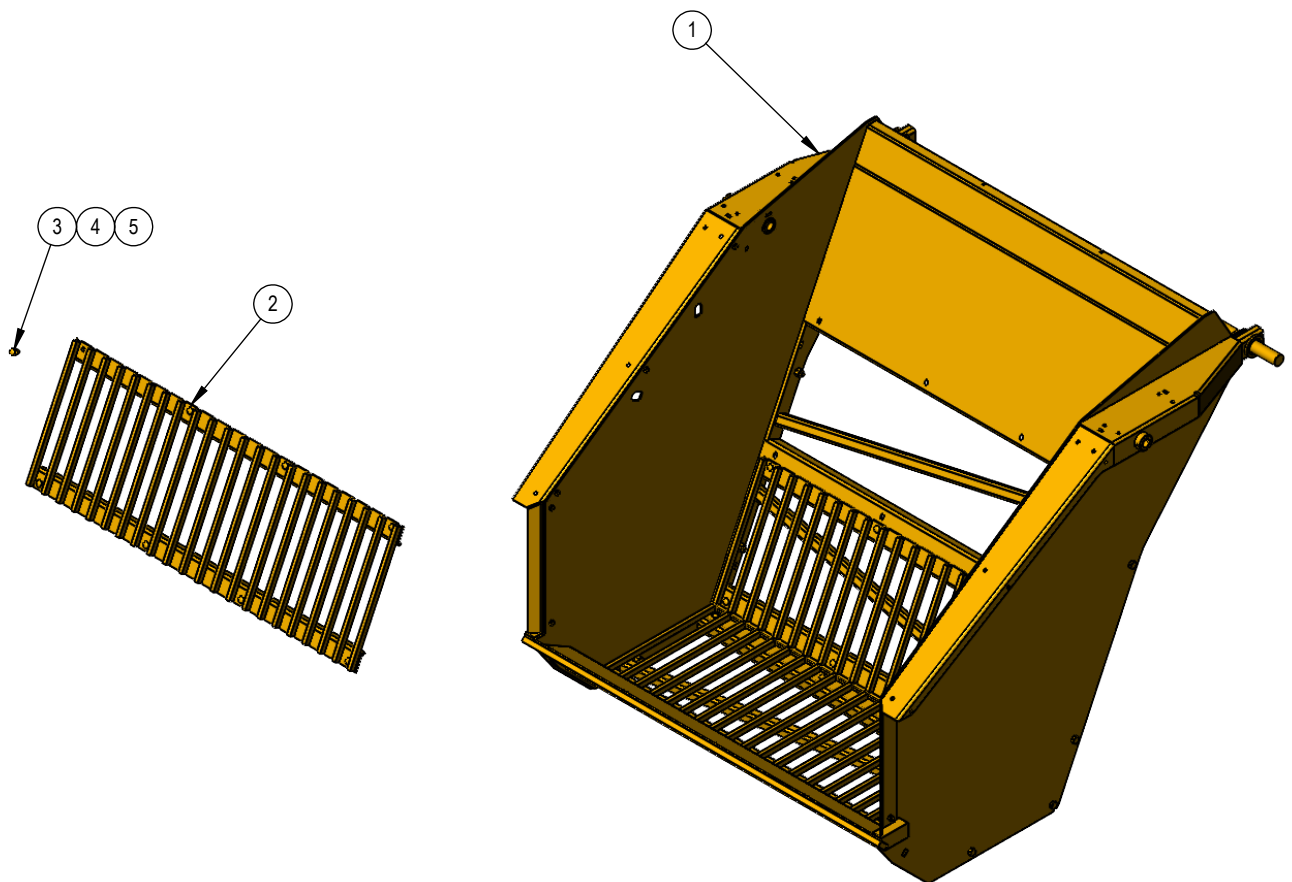
RR0280-05E13 TIPPER ASS'Y

ITEM	NO	Description	QTY
1	25AB2001208	PIN HEX HEAD 2 " WITH HOLE	1
2	25AC1000800	PIN 1" X (1 HOLE)	2
3	25AC1080700	AXIS DIA. 1.500" X 7.000" LONG (1 HOLE)	1
4	25AC1080804	AXIS DIA. 1.500" X 8.250" LONG (1 HOLE)	2
5	25AC1080904	AXIS DIA. 1.500" X 9.250" LONG (1 HOLE)	3
6	30004-2	HYD. CYLINDER 4" X 16" (BUSHING)	1
7	30004-8	HYD. CYLINDER 4" X 48" (BUSHING)	1
8	30004-8	HYD. CYLINDER 4" X 48" (BUSHING)	1
9	45AA004200208	HEX BOLT 1/4-20NC x 2 1/2" GR5	1
10	45AA007140308	HEX BOLT 7/16-14NC X 3 1/2" GR5	1
11	45AA008130308	HEX BOLT 1/2-13NC X 3 1/2" GR5	2
12	45AA010110204	HEX BOLT 5/8-11NC x 2 1/4" GR5	4
13	45AA010110300	HEX BOLT 5/8-11NC X 3" GR5	4
14	45AA010110800	HEX BOLT 5/8-11NC X 8" GR5	8
15	45AA012100208	HEX BOLT 3/4-10NC X 2 1/2" GR5	12
16	46AB010	HARDENED FLAT WASHER 5/8	24
17	46AB012	HARDENED FLAT WASHER 3/4"	20
18	46AB012	HARDENED FLAT WASHER 3/4"	4
19	46AB200	HARDENED FLAT WASHER 2"	6
20	47AB00420	NYLON LOCK NUT 1/4-20 NC	1
21	47AB00714	NYLON LOCK NUT 7/16"-14NC	1
22	47AB00813	NYLON LOCK NUT 1/2-13 NC	3
23	47AB01011	NYLON LOCK NUT 5/8"-11NC	16
24	47AB01210	NYLON LOCK NUT 3/4-10NC	12
25	R-05016	SPLIT BUSHING BEARING	4
26	R-34001	BUSHING	4
27	RR-05053	ROCK PICKER PIVOT	2
28	RR-05074	ROCK PICKER FRAME	1
29	RR-05076	ROCK PICKER DRAW BAR	1
30	RR-11002	REEL SUPPORT	1
31	RR-28006	WEAR PLATE	1
32	RR-28007	SUPPORT PLATE	1
33	RR-30E01	CYLINDER WITH LIFT ARM	2
34	RR0280-05E15	ROCK PICKER TIPPER	1
35	RR0280-06E05	REEL ROCK MASTER	1
36	RR0280-11E01	REEL SUPPORT KIT	1



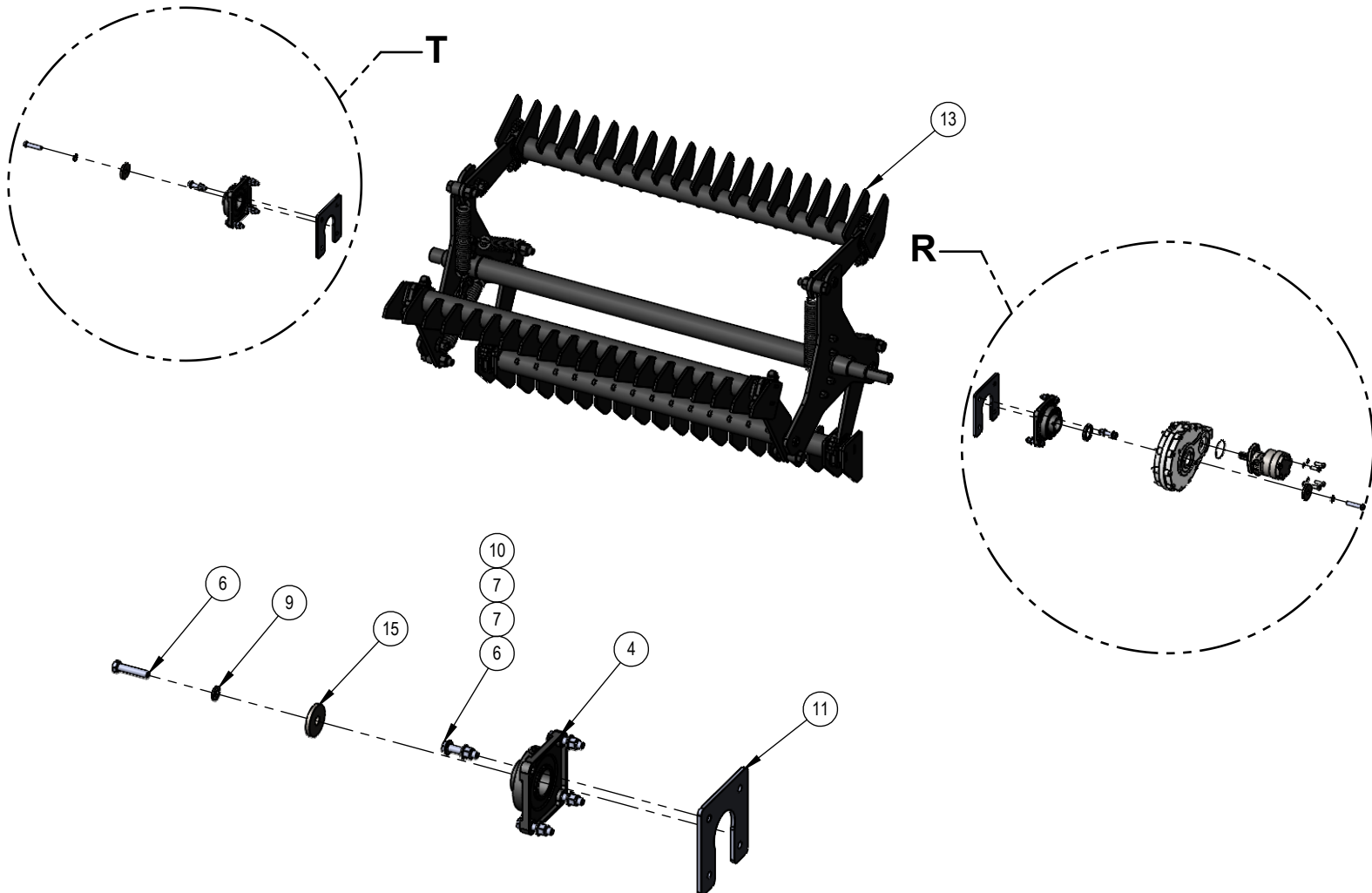
RR0280-05E15 ROCKPICKER BUCKET KIT

ITEM	NO	Description	QTY
1	RR-05073	ROCK PICKER RM8080 BUCKET KIT	1
2	RR-05079	ROCK PICKER BUCKET GRILLE	3
3	45CC008130108	CARRIAGE BOLT 1/2"-13NC X 1 1/2" GR5	24
4	46AB008	HARDENED FLAT WASHER 1/2"	24
5	47AB00813	NYLON LOCK NUT 1/2-13 NC	24

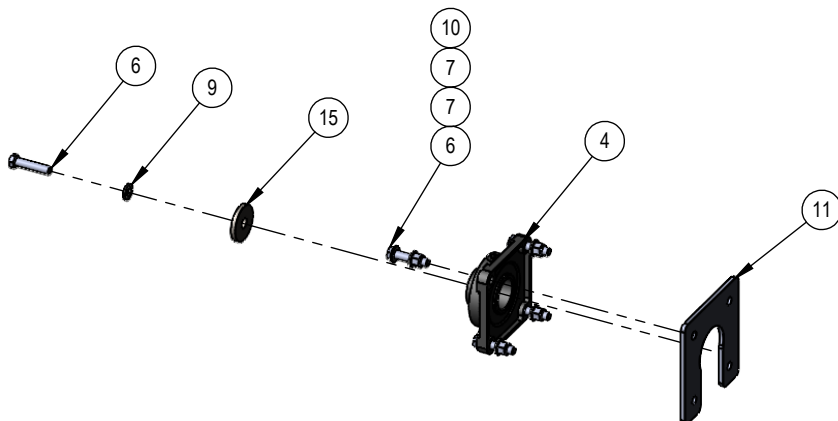




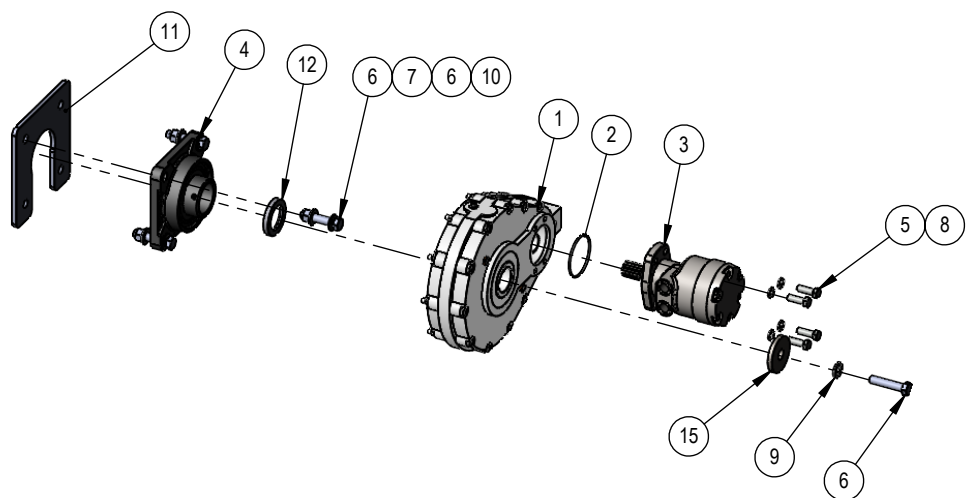
RR0280-06E05 REEL ROCK MASTER



DETAIL T



DETAIL R





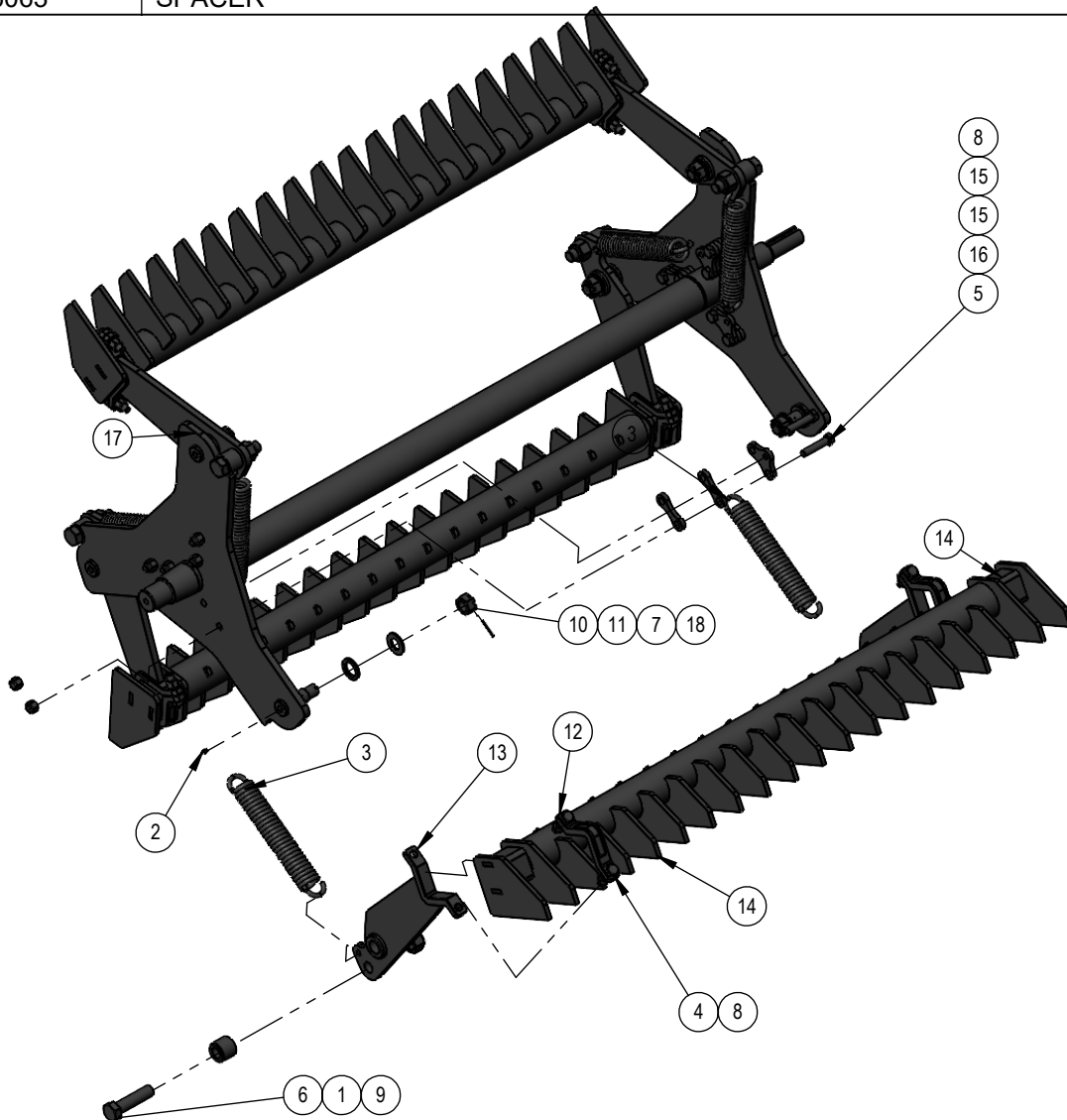
RR0280-06E05 REEL ROCK MASTER

ITEM	NO	DESCRIPTION	QTY
1	06122	PLANETARY GEAR BOX #RR210MS/3.91:1	1
2	31050-17	O-RING ORB-236	1
3	31092	HYDR. MOTOR (ROLLER STATOR) 300cc	1
4	34006-8-P5	FLANGE BEARING 2 1/2" (SKF)	2
5	45AA008130108	HEX BOLT 1/2-13NC X 1 1/2" GR5	4
6	45AA010110300	HEX BOLT 5/8-11NC X 3" GR5	10
7	46AB010	HARDENED FLAT WASHER 5/8	16
8	46AC008	LOCK WASHER 1/2"	4
9	46AC012	LOCK WASHER 3/4"	2
10	47AB01011	NYLON LOCK NUT 5/8"-11NC	8
11	RR-06026	RACK SUPPORT	2
12	RR-28002	ROCK PICKER GEARBOX SPACER	1
13	RR0280-06M05	REEL ASS'Y	1
14	UN-06001-41	KEY 1/2" X 1/2" X 4 1/4" 1RE	1
15	UN-28007-16	WASHER 7/8" ID X 3" OD X 3/8"	2



RR0280-06M05 REEL ASS'Y

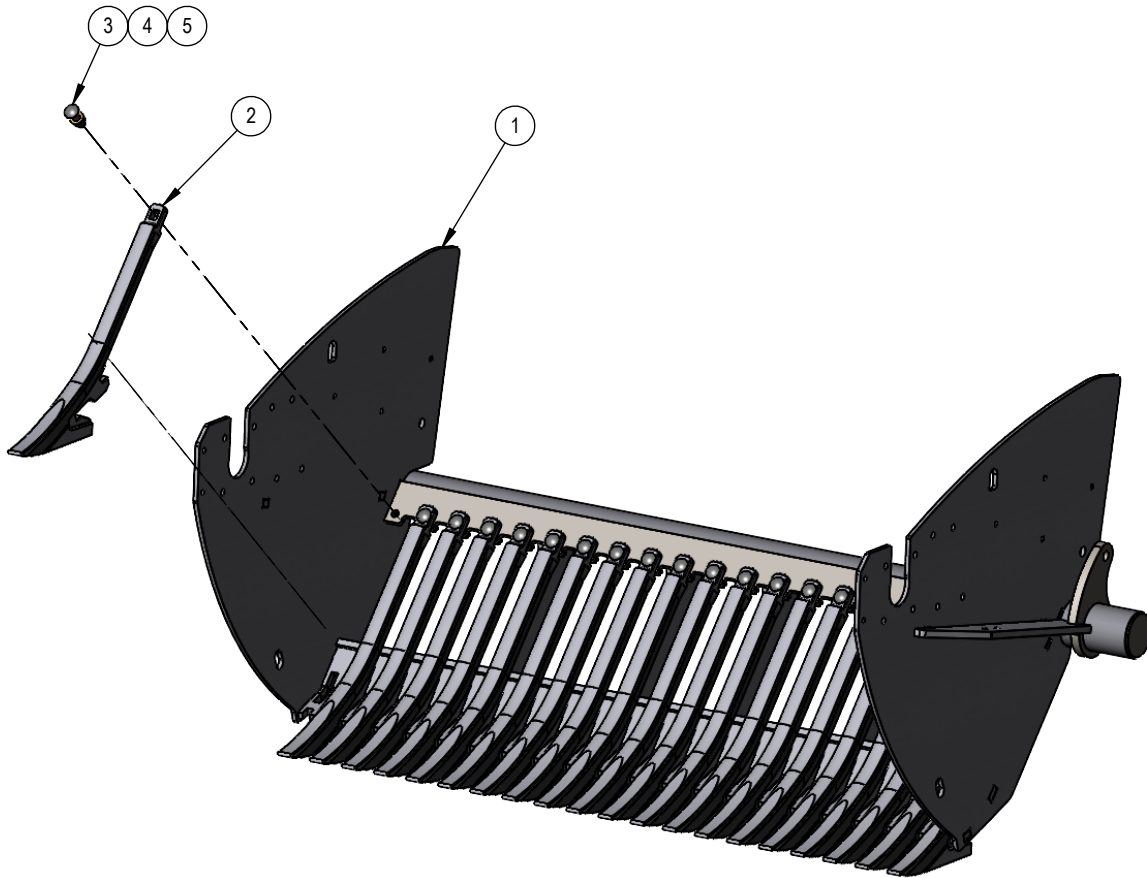
ITEM	NO	DESCRIPTION	QTY
1	26AB1040200	WELD BUSHING 1 1/4" ID. X 2 1/4" OD.X 2"LG	6
2	35012	STRAIGHT GREASE FITTING 1/8 NPT	6
3	35030	EXTENSION SPRING	6
4	45AA012100300	HEX BOLT 3/4-10NC X 3" GR5	12
5	45AA012100308	HEX BOLT 3/4-10NC x 3 1/2" GR5	12
6	45AA104070500	HEX BOLT 1 1/4-7NC X 5" GR5	6
7	46AB104	HARDENED FLAT WASHER 1 1/4"	6
8	47AB01210	NYLON LOCK NUT 3/4-10NC	24
9	47AB10407	NYLON LOCK NUT 1 1/4"-7NC	6
10	47AJ010407	HEX SLOTTED NUT 1 1/4"-7 NC	6
11	49AA040200	SPRING PIN 1/4" x 2"	6
12	RR-06050	RACK ATTACH	6
13	RR-06055	RACK ARM	6
14	RR-06057	RACK TEETH	3
15	RR-06060	REEL SPACER	12
16	RR-06061	SPRING CLIP	6
17	RR-06062	TRANSVERSAL RACK SUPPORT	1
18	RR-06063	SPACER	6





RR0280-11E01 REEL SUPPORT KIT

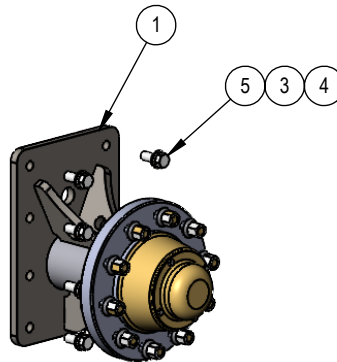
ITEM	NO	Description	QTY
1	RR-11001	RACK SUPPORT	1
2	RR-21009	ROCK PICKER FORK	21
3	45CC012100300	CARRIAGE BOLT 3/4"-10NC X 3" GR5	21
4	46AB012	HARDENED FLAT WASHER 3/4"	21
5	47AB01210	NYLON LOCK NUT 3/4-10NC	21





RR-01E04 WHEEL ASSEMBLY 550 / 45X22.5 16PRTL

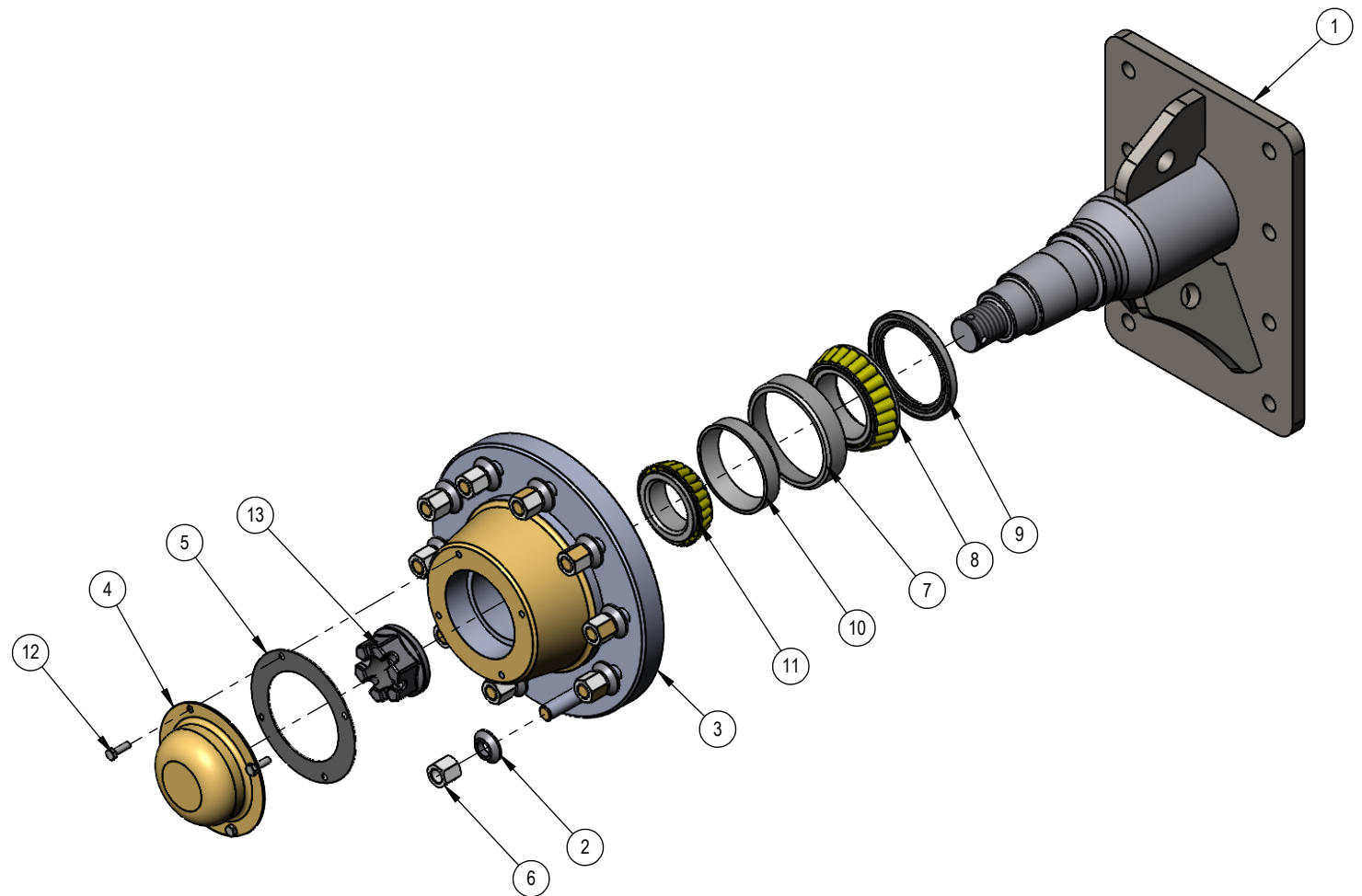
ITEM	NO	Description	QTY
1	RR-01E05	HUB KIT 16000 LB	2
2	03031	TIRE AND WHEEL 550/45X22.5 + 22.5X16X8 (GREY)	2
3	46AB012	HARDENED FLAT WASHER 3/4"	16
4	46AC012	LOCK WASHER 3/4"	16
5	45AA012100200	HEX BOLT 3/4-10NC X 2" GR5	16





RR-01E05 HUB KIT 16000 LB

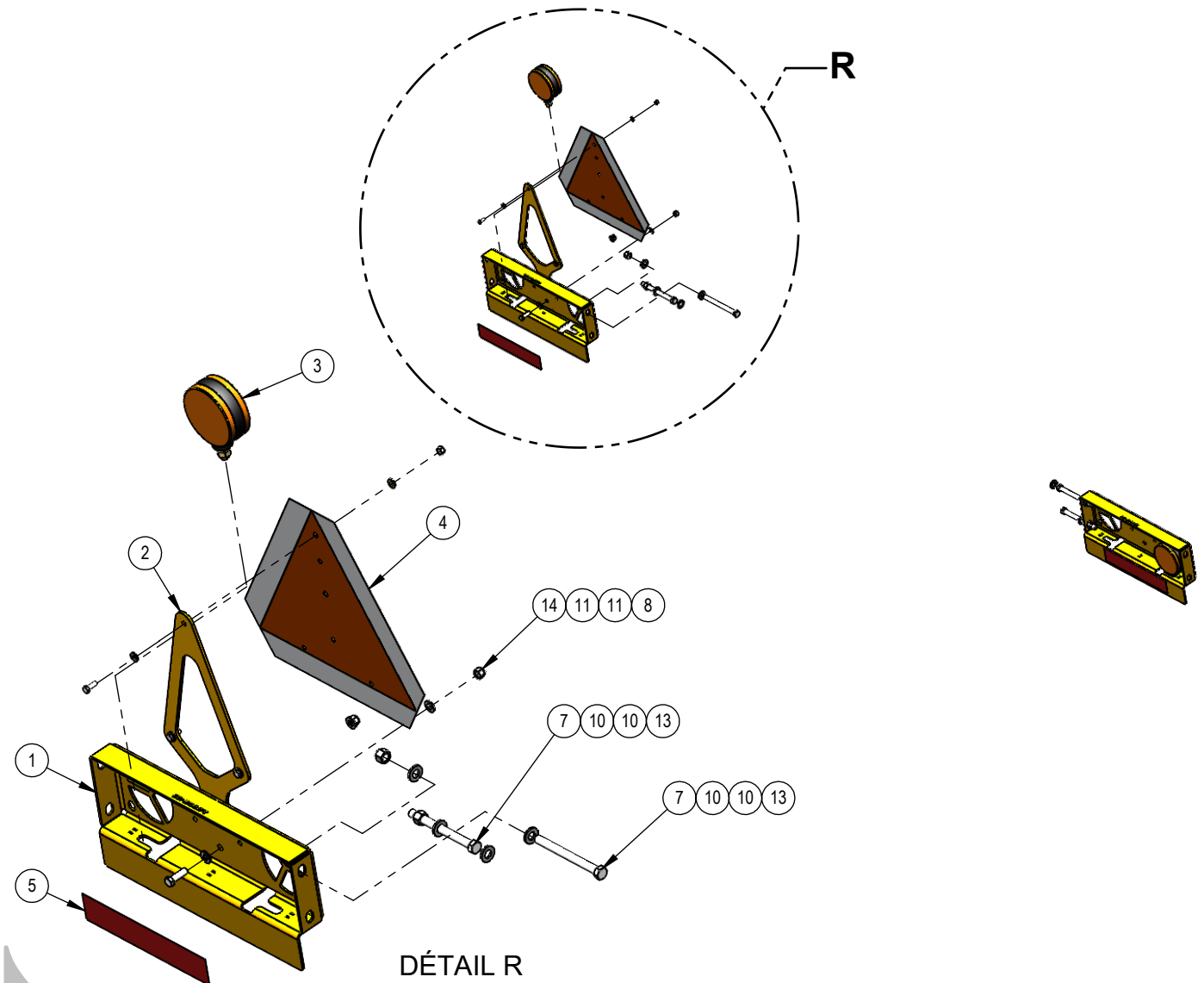
ITEM	NO	DESCRIPTION	QTY
1	RR-01004	AXLE 16,000 LBS (RR)	1
2	UN-01001	16,000 LBS HUB WASHER	10
3	01004-4	16,000 LBS HUB	1
4	01006-4A	DUST CAP 16,000 LB HUB	1
5	01006-4B	DUST CAP SEAL	1
6	01007-3	3/4-16 NF. HEX. NUT	10
7	34009-8	BEARING CUP 5.25"	1
8	34008-8	CONE BEARING 3.25" ID.	1
9	34010-5	OIL SEAL	1
10	34009-9	BEARING CUP 4.43" O.D.	1
11	34008-9	CONE BEARING 2.500" I.D.	1
12	45AA005180100	HEX BOLT 5/16-18NC X 1" GR5	4
13	01008-5	CASTEL NUT 1 3/4-12 UN	1





RR-36E02 SIGNALING KIT

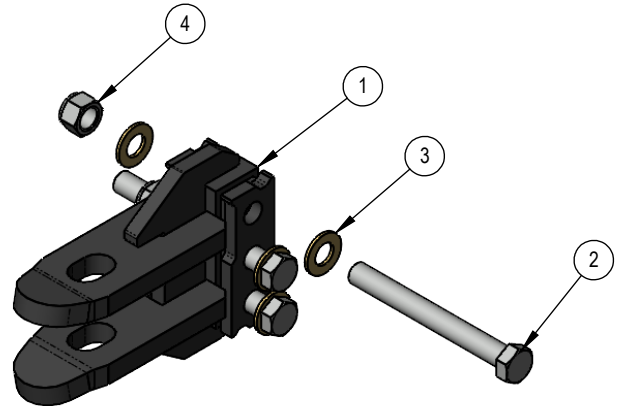
ITEM	NO	DESCRIPTION	QTY
1	RR-36004	ROCKPICKER LIGHT SUPPORT	2
2	UN-36001-3	SLOW VEHICLE SIGN BRACKET	1
3	32029	YELLOW STOP LIGHT 4"	2
4	36002	SLOW MOVING VEHICLE SIGN (SMV)	1
5	36003-010	RED REFLECTING BAND X 11" LG	2
6	45AA004200012	HEX BOLT 1/4-20NC x 3/4" GR5	3
7	45AA008130508	HEX BOLT 1/2-13NC x 5 1/2" GR5	4
8	45AA006160104	HEX BOLT 3/8-16NC x 1 1/4" GR5	2
9	46AB004	HARDENED FLAT WASHER 1/4"	6
10	46AB008	HARDENED FLAT WASHER 1/2"	7
11	46AB006	HARDENED FLAT WASHER 3/8"	4
12	47AB00420	NYLON LOCK NUT 1/4-20 NC	3
13	47AB00813	NYLON LOCK NUT 1/2-13 NC	4
14	47AB00616	NYLON LOCK NUT 3/8"-16NC	2



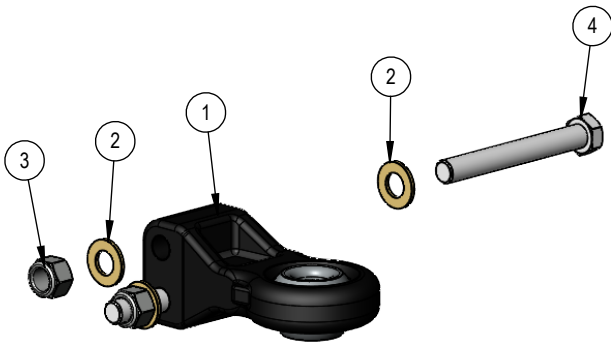


UN-20E07 FEMALE HITCH 1 1/4" KIT

ITEM	NO	DESCRIPTION	QTY
1	UN-20039	1 1/4 FEMALE ATTACHMENT	1
2	45AB100080900	HEX BOLT 1"-8NC X 9" GR8	3
3	46AB100	HARDENED FLAT WASHER 1"	6
4	47AB10008	NYLON LOCK NUT 1"-8NC	3



UN-20E12 BALL HITCH CAT.3 KIT

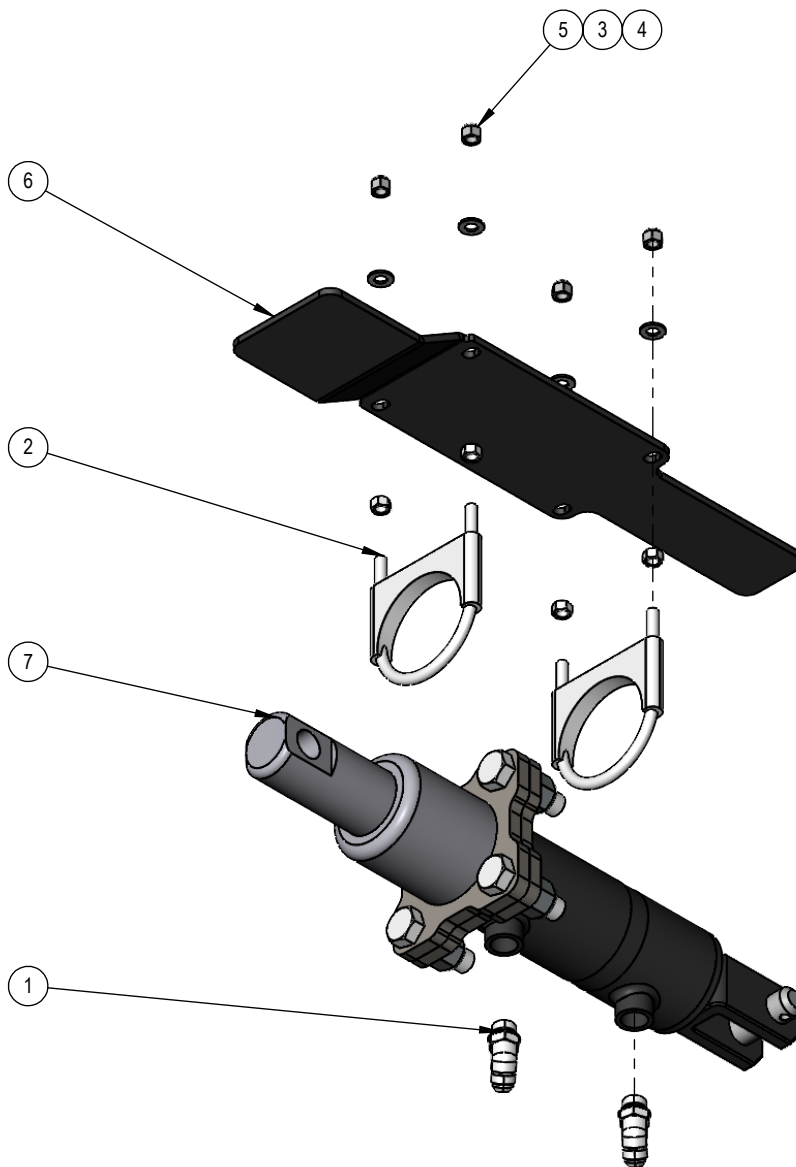


ITEM	NO	DESCRIPTION	QTY
1	20013-3	BALL HITCH CAT. 3 (BH3SABA)	1
2	46AB100	HARDENED FLAT WASHER 1"	4
3	47AB10008	NYLON LOCK NUT 1"-8NC	2
4	45AB100080800	HEX BOLT 1"-8NC X 8" GR8	2



RR-30E01 CYLINDER WITH LIFT ARM

ITEM	NO	DESCRIPTION	QTY
1	31030-3	45° HYD FITTING 1/2" ORB(M) X 1/2" JIC(M)	2
2	35045-7	MUFFLER CLAMP 3-1/2" NUT 3/8 IN	2
3	46AB006	HARDENED FLAT WASHER 3/8"	4
4	47AA00616	HEX NUT. 3/8-16NC	4
5	47AB00616	NYLON LOCK NUT 3/8"-16NC	4
6	RR-04059	GUARD CYLINDER	1
7	UN-30638	VERIN AVEC BRAS DE POUSSEE	1

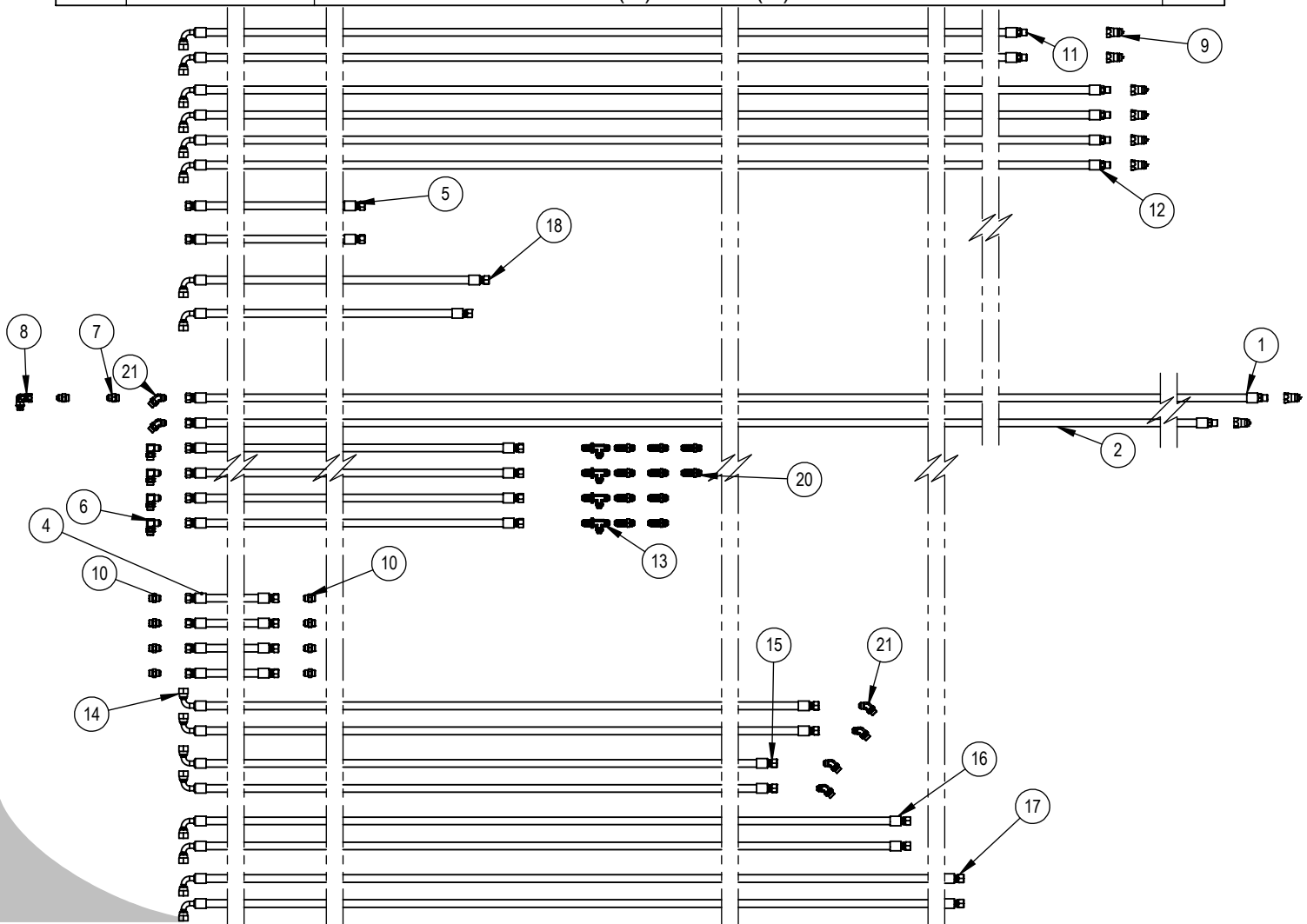




RR0280-29E04

HYDRAULIC HOSES KIT ROCK PICKER

ITEM	NO	description	QTY
1	UN-29031-262	HYD. HOSE 1/2" LP 1/2" JIC(F) x 1/2" ORB(M) X 262" LG	1
2	UN-29031-256	HYD. HOSE 1/2" LP 1/2" JIC(F) x 1/2" ORB(M) X 256" LG	1
3	UN-29009-062	HYD. HOSE 1/2 LP 1/2 JIC(F) x 1/2 JIC(F) X62	4
4	UN-29009-019	HYD. HOSE 1/2 LP 1/2 JIC(F) x 1/2 JIC(F) X19	4
5	UN-29009-043	HYD. HOSE 1/2 LP 1/2 JIC(F) x 1/2 JIC(F) X43	2
6	31013-16	ADAP. 1/2" ORB(M) / 1/2" JIC(M)(90)	4
7	31014-14	ADAP. 1/2" JIC(M) / 1/2" ORB(M)(STR)	2
8	31013-54	ADAP. 1/2" ORB(M) / 1/2" JIC(F)(90)	1
9	31016-2	QUICK COUPLER MALE 1/2"ORB(F) (S71-15P)	8
10	31014-15	ADAP. 1/2" JIC(M) / 5/8" ORB(M)(ST)	12
11	UN-29030-220	HYD. HOSE 1/2" LP 1/2" JIC(F)(90) x 1/2" ORB(M) X 220	2
12	UN-29030-230	HYD. HOSE 1/2" LP 1/2" JIC(F)(90) x 1/2" ORB(M) X 230	4
13	31036	ADAP. BULK HEAD 1/2" JIC(M) / 1/2" JIC(M) / 1/2" JIC(M)(TE ST) (NUT)	4
14	UN-29010-119	HYD. HOSE 1/2" LP 1/2" JIC(F) x 1/2" JIC(F)(90)X 119	2
15	UN-29010-114	HYD. HOSE 1/2" LP 1/2" JIC(F) x 1/2" JIC(F)(90)X 114	2
16	UN-29010-130	HYD. HOSE 1/2" LP 1/2" JIC(F) x 1/2" JIC(F)(90)X 130	2
17	UN-29010-177	HYD. HOSE 1/2" LP 1/2" JIC(F) x 1/2" JIC(F)(90)X 177	2
18	UN-29010-058	HYD. HOSE 1/2" LP 1/2" JIC(F) x 1/2" JIC(F)(90)X 58	1
19	UN-29010-056	HYD. HOSE 1/2" LP 1/2" JIC(F) x 1/2" JIC(F)(90)X 56	1
20	31043-5	ADAP. BULK HEAD 1/2" JIC(M) / 1/2" JIC(M)(STR)	10
21	31030-3	45° HYD FITTING 1/2" ORB(M) X 1/2" JIC(M)	6





SHoule limited guarantee on agricultural and industrial

SHoule Inc guarantees every new farm and commercial product of the manufacturer SHoule against any defect of material and manufacturing, within the framework of a normal use, during one year after the date of retail purchase SHoule will guarantee its product for (1) year, on parts and imperfection of manufacturing This Limited

Guarantee will apply only to equipments made by S.Houle

EQUIPMENT AND ACCESSORIES WHICH ARE NOT MADE BY S HOULE ARE GUARANTEED ONLY IN THE MEASURE WHICH THE GUARANTEE OF the ORIGINAL MANUFACTURER DETERMINES AND APPROVES THAT THERE IS A MANU- FACTURING DEFECT During the period limited by guarantee indicated above, any defect in the material (equipment) or in the manufacturing of any equipment fabricated by S.Houle will be repaired or replaced without responsibility by an authorized independent retailer An authorized retailer has to make the repair under guarantee or the replacement of parts The costs of labour must be approved by manufacturing SHoule before beginning (undertaking) the works otherwise these could be totally refused, according to the politics (policy) of working refund (repayment) of S.Houle SHoule reserves the right to supply parts, for replacement which he (it) considers appropriate

RESPONSIBILITY OF THE BUYER: This limited guarantee requires (demands) the appropriate maintenance and the ove- rhauls of the agricultural or commercial equipment such as indicated in operator manual supplied with the new equipment The cost of the regular maintenance or the required services is the responsibility of the buyer The buyer has to keep his invoices which prove that the maintenance was made The limited guarantee may be revoked (dismissed) by S.Houle if the above mentioned conditions (requirements) are not respected.

EXCLUSIONS AND LIMITATIONS Guarantees WILL NOT APPLY on:

- 1 Any defect which was caused (according to the judgment of SHoule by a use other than that normally planned, or by the following causes: (i) accident (ii) a misuse or a carelessness(negligence)(iii) excessive use (iiii) lack of reasonable and appropriate maintenance,(v) incorrect repair or bad installation (vi) or when warehoused (stored away)(vii) modification not authorized by SHoule (viii) natural disasters (ix) vandalism (x) parts, or accessories installed on the equipment which were not made or not installed by the authorized retailer (xi) elements (xii) collision or accidents
- 2 Any agricultural or commercial equipment which the identification number or serial number or the trade names were changed or removed
- 3 Any agricultural or commercial equipment on services of which the required or recommended overhaul were executed by using parts not made, approved or supplied by SHoule or not meeting the specifications, but without limitation, lubricants (oil, grease) and liquids for hydraulics
- 4 The equipment used for rental, industrial work, construction or if the equipment is used for a purpose other than the appli- cation in which it was designated (design) for by SHoule
- 5 Any equipment used for field demonstrations by a retailer not approved by S.Houle The guarantee will be to the discretion of S.Houle or any other demonstration
- 6 Any defect which was caused (according to the judgment of S.Houle) by the operation of the equipment without submitting itself to the standard (in the standard) procedures of exploitation (operation) described in operator manual
- 7 The guarantee on tires is the responsibility of the manufacturer of the respective product
- 8 Cost of the transport, if necessary, to transport to the retailer S.Houle
- 9 In no case the responsibility of S.Houle can exceed the cost of the product
- 10 SHoule will be subjected in no circumstances to compensate, whoever it is, for the loss of income for a discontinued equipment, for a time of the repairs no matter the reason for this breakdown.
- 11 The costs of estimation or the diagnostic and the overtime of work for the repair are not covered under this limited gua- rantee policy
- 12 The depreciation caused by the normal wear, the lack of reasonable and appropriate maintenance, the misuse, and/or the lack of protection during warehousing
- 13 Accessories and electronic components which are not of or from S.Houle are guaranteed only under the limited guarantee by this manufacturer
- 14 Articles of wear which are registered by the group of products below:

Normal wear parts: flow divider, wear plates, the bolts, the nuts, spring blades, the swivel skid shoe, the special bolts of swivel- ling skid shoe, slide channels, chains and chain attachments, shoe, hydraulic hoses, swivel, clutch and their components, the gear box, the shaft, ...

EXCLUSION FROM GUARANTEES: SHOULE RESERVES THE RIGHT TO MODIFY, TO CHANGE AND TO IMPROVE THEIR PRODUCTS WITHOUT INCURRING ANY OBLIGATION TO REPLACE PRODUCTS PREVIOUSLY SOLD WITH SUCH A MODIFICATION NO PERSON IS AUTHORIZED TO GIVE ANOTHER GUARANTEE, OR TO ASSUME ANY ADDITIONAL OBLIGATION ON EQUIPMENTS MADE BY S.HOULE



S Houle inc.

300 Industrial Blvd.

St-Germain-de-Grantham, Quebec, Canada, J0C 1K0

Phone : 819 395-4380 Fax. : 819 395-5516

Toll free : 1 888-404-4380

E-Mail : info@shoule.com Web: www.shoule.com

Product Registration

Dealer instructions:

Make sure registration is complete and signed.

Product Information :

MACHINE MODEL : _____ DELIVERY DATE : _____ / _____ / _____
mm dd yyyy

SERIAL NUMBER : _____

OPTIONAL EQUIPMENT : _____

Customer Information :

FIRST & LAST NAME : _____ PHONE : _____

MAILING ADDRESS : _____ EMAIL : _____
Civic number and street

City _____

State / Province _____ Zip Code _____

Dealer Information :

DEALER NAME : _____ PHONE : _____

MAILING ADDRESS : _____ EMAIL : _____
Civic number and street

City _____

State / Province _____ Zip Code _____

Signatures :

Owner or designated representative signature

Authorized dealer signature

Note : Both dealer and owner must sign in order to validate the warranty.

I hereby acknowledge that:

1. I have received and accepted delivery of equipment described.
2. The equipment was checked thoroughly for loose or missing parts and has been adjusted in accordance with the pre-delivery checklist.
3. I have been provided with and have carefully read the instruction manual.
4. I have read and understand the nature and extent of the warranty and understand clearly that there were and are no other representations or warranties, either express or implied, made by anyone.
5. A copy of the present document must be completed and transmitted to S. Houle Inc.

6. I have been advised on proper operation, maintenance and lubrication procedures of this equipment.
7. I have been instructed on and do understand the application, limitations and capacities this equipment was designed and recommended for, all as described in the Instruction Manual and other literature published by S.Houle Inc.

ONE YEAR WARRANTY COVER PARTS ONLY, EFFECTIVE WHEN THIS FORM HAS ALL APPLICABLE INFORMATION COMPLETED, IS SIGNED BY BOTH THE OWNER AND THE DEALER AT THE TIME OF DELIVERY, THEN FORWARDED TO **S HOULE INC.** WARRANTY SERVICE MAY BE DENIED IF THIS FORM CONTAINS FALSE INFORMATION IS OR INCOMPLETE.

S Houle Inc.

300 boul. Industriel
St-Germain-de Grantham, Québec, Canada
J0C1K0
Tél. : 819-395-4380 téléc. : 819-395-5516
Sans frais : 1-888-404-4380
Courriel : info@shoule.com
Site : www-shoule.com

S Houle Inc.

300 Industrial Blvd
St-Germain-de Grantham, Québec, Canada
J0C1K0
Tél. : 819-395-4380 Fax : 819-395-5516
Toll Free : 1-888-404-4380
Mail : info@shoule.com
Web : www-shoule.com